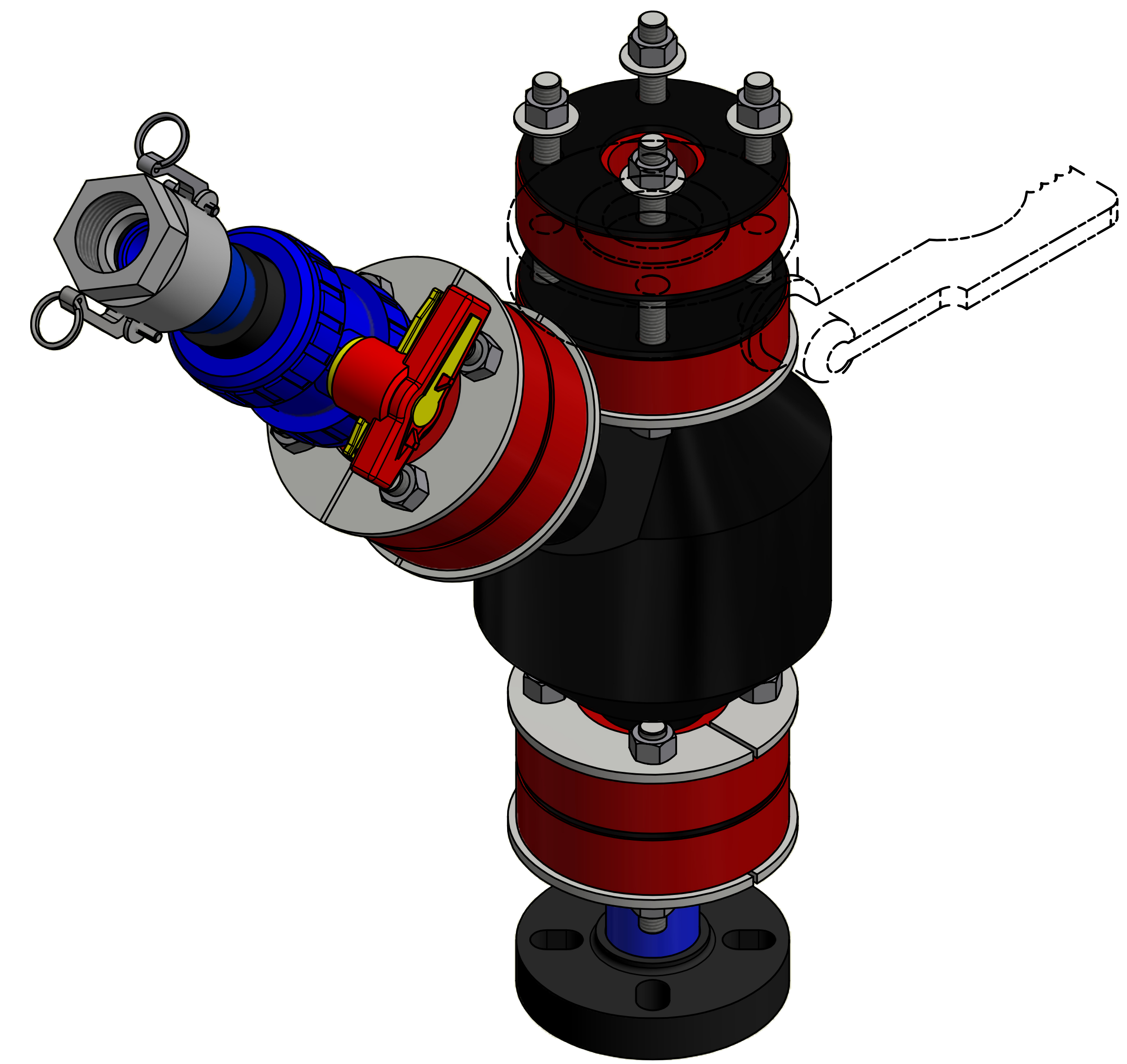
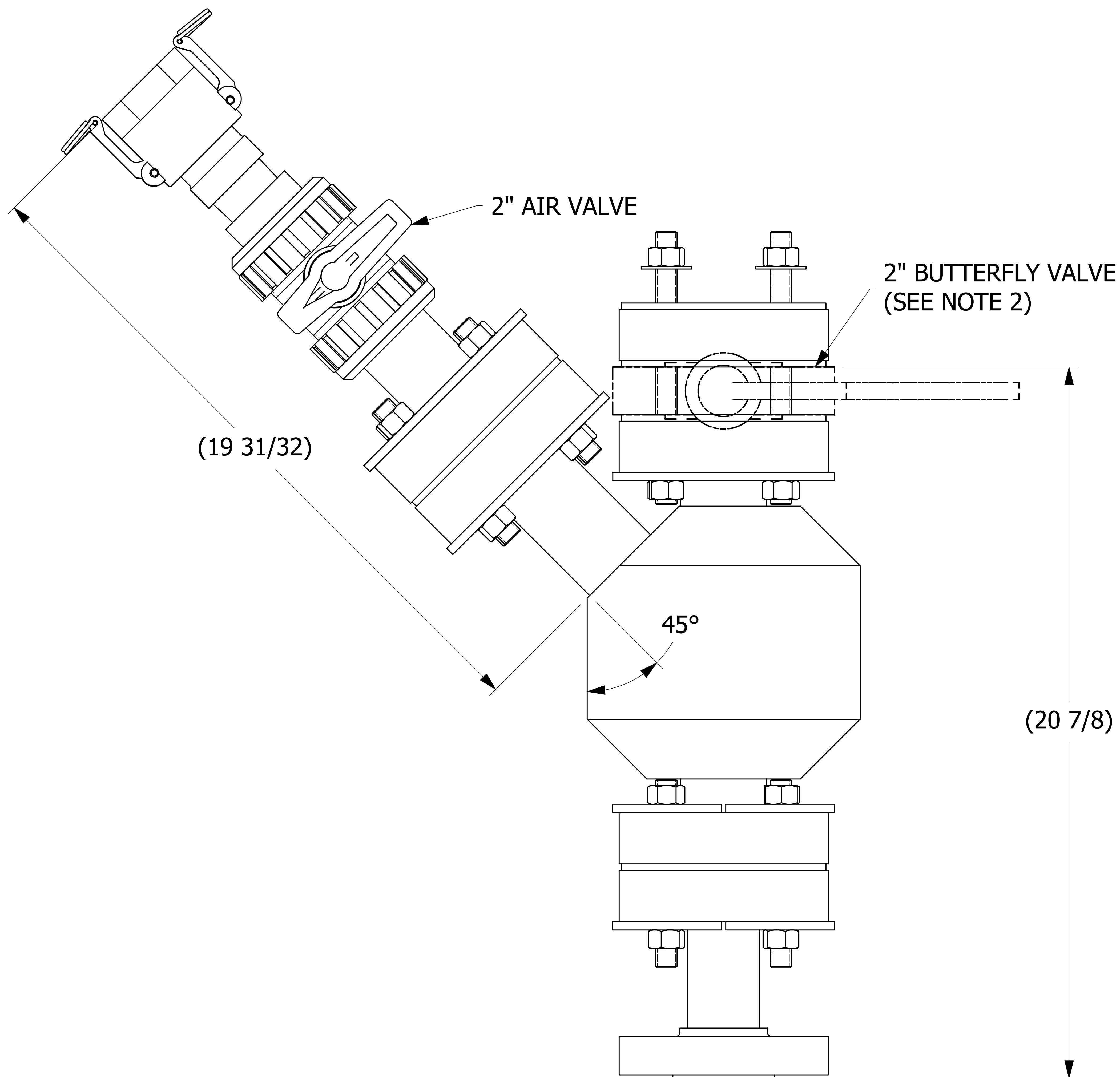


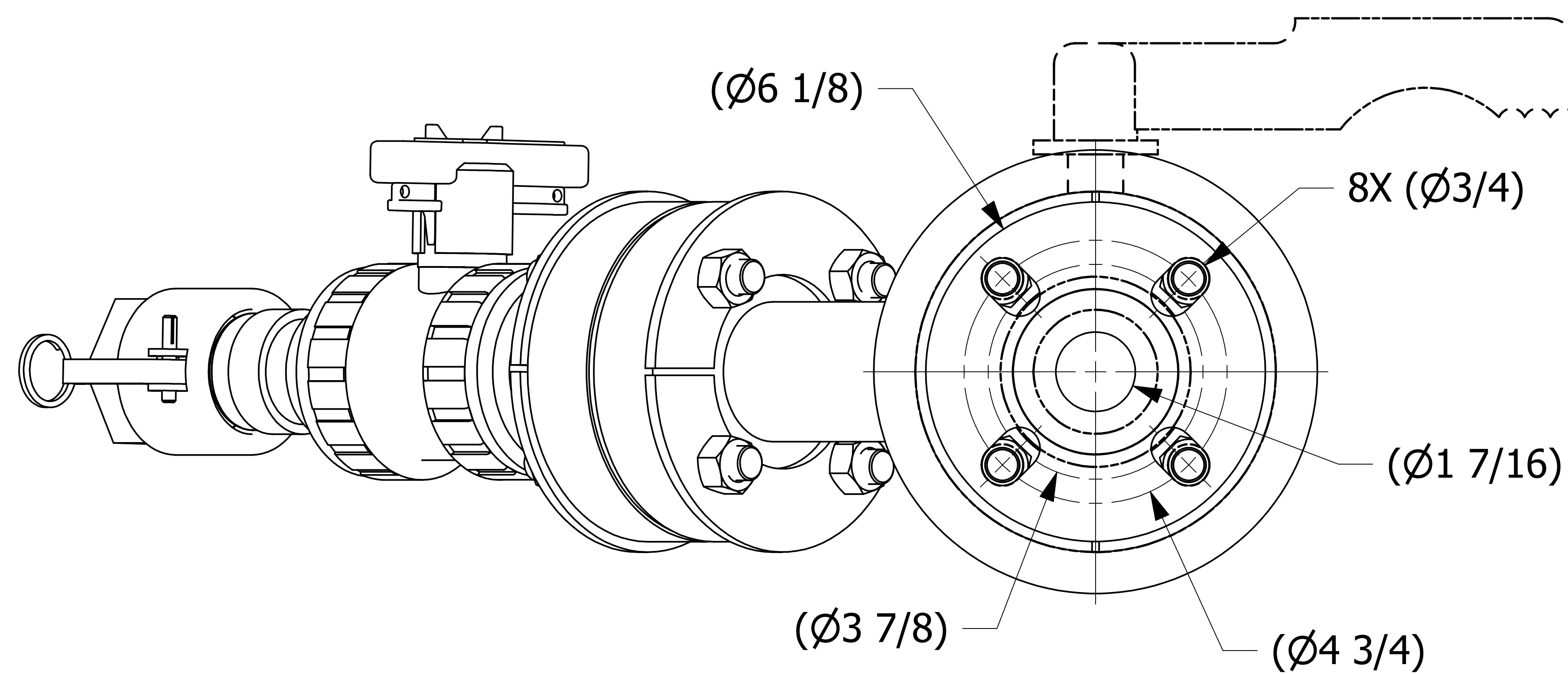
SALES DRAWING SALES DRAWING SALES DRAWING SALES DRAWING

SALES DRAWING SALES DRAWING SALES DRAWING SALES DRAWING



NOTES:

- GASKET MATERIAL IS PEROXIDE CURED BLACK EPDM.
- BUTTERFLY VALVE TO BE SOLD SEPARATELY.



I	DGP	03-07-16	REMOVED (4) STUD0653003-316. ADDED (3) FG2215029, HSSF38008, (4) STUD588SS. UPDATED NOTES
H	DGP	09-30-15	UPDATED NOTES
G	DGP	04-16-15	REPLACED PDK15SC W/ PDK15SC29A, UPDATED NOTES
F	TAK	2-2-15	REMOVED BUTTERFLY VALVE FROM BOM & ADDED NOTE
E	TAK	8-12-13	REMOVED HB70319, UPDATED BOM QTY FOR HN58S6 & REPLACED STUD58SS W/ STUD0645003
D	WEB	2-13-13	REPLACED PARTS HS215AIFP, BV150FP, HSN112X3PVC80, B150F, & B150D W/ HSAVAPE35354, HSRK15PE, & PDK15SC
C	TAK	11-29-12	REPLACED HSN112PVC80 W/ HSN112X3PVC80& STUD58512SS W/ STUD585SS. UPDATED TITLE BLOCK
B	JJK	8-17-12	REPLACED WS475S07 WITH WS475S02
A	BG	8-1-12	NEW PART ADDED TO THE NETWORK
REV	BY	DATE	DESCRIPTION

<small>UNLESS OTHERWISE SPECIFIED DIMENSIONAL TOLERANCES FRACTIONAL: ±1/16 X.XX: ±.03 X.XXX: ±.015 ANGULAR: ±1° DEBURR ALL SHARP EDGES. ALL MACHINED SURFACES TO HAVE A 125 RMS FINISH UNLESS NOTED OTHERWISE. THIRD ANGLE PROJECTION</small>	DRAWN BY:	JJK
	CHECKED BY:	CHL
	PROTOTYPE BY:	JJK
	PROTOTYPE DATE:	4/9/2012
	APPROVED FOR PRODUCTION BY:	CHL
	PRODUCTION DATE:	8/1/2012

SALCO PRODUCTS, INC.			
PART NAME: RAILCAR AIR/VAPOR ADAPTOR			
MATERIAL: SALCO PE/ SS			
PROJECT #:	031212AO	SHEET #:	1 OF 1
DRAWING #:	E32844	PART #:	HSCSLSHMUAA1
SCALE:		2:3	